



# ENERSHIELD Air Barriers

Specializing in Energy Management Climate Control Systems

## Energy Saving Technology

Manufacturing & Design

16821 – 113 Avenue, Edmonton Alberta T5M 2X2

Phone (780) 482-4662 • Fax (780) 482-4074

Toll Free – 1-866-464-3667

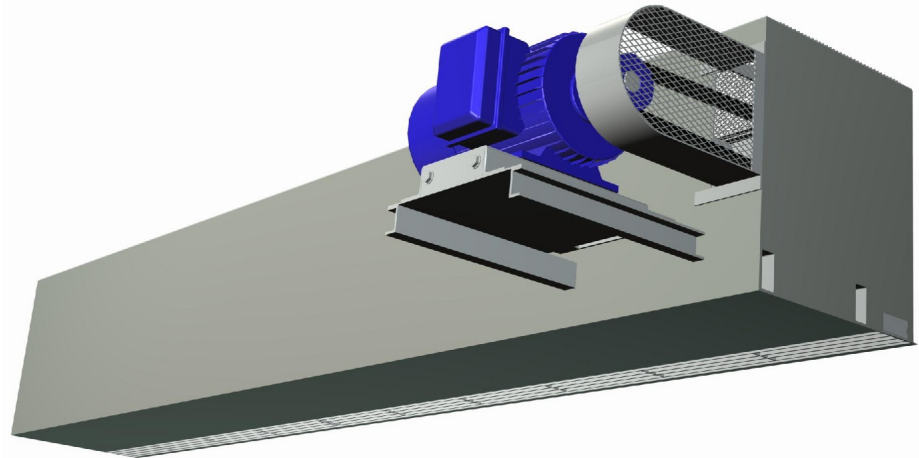
www.enershield.ca

## Ultrashield US-120 - Air Barrier Specifications

Enershield Ultrashield model US-120 is 120" / 3048 mm in length. Powder coated 1/8" steel frame construction & 20 gauge G.90 sheet metal jacket, c/w acoustic insulation with acrylic anti-microbial coating. Air Barrier is provided with powder coated telescopic sliders & wall brackets, lockable remote NEMA 1 control panel incorporating soft start and photo electric cell door sensor for automatic activation upon door opening. Operating characteristics: 5 forward curved double inlet blowers providing Air Velocity = 6500 fpm, Air Volume = 19,875 cfm, Electrical: see chart below Motors: 1 @ 10 hp = 10 hp total (7460 Watts). Weight = 700 lbs. Decibel rating is 74 dB at a distance of 10' from the unit. CSA Certified.

Warranty: 2 yrs parts.

Model	US-120
<b>Cabinet Length in./mm</b>	120" 3048 mm
<b>Height x Width</b>	22"x 19 1/2" 559mm x 496mm
<b>Weight lbs/Kgs</b>	700 lbs. 319 kgs.
<b>Horse Power</b>	10 hp 7460 watts
<b>Fans/Blowers</b>	5
<b>Motors TEFC</b>	1
<b>Total Horsepower</b>	10 hp 7460 watts
<b>Decibels</b>	74 dB
<b>Max FPM at Nozzle</b>	6500 fpm 33 m/s
<b>CFM at Nozzle</b>	19,875 cfm 9380 l/s
<b>Outlet Velocity Uniformity</b>	95%



Available Motors			
Operating Voltage:	575/3/60	460/3/60	208/3/60
Amp Draw FLA	10 Amps ea.	12.5 Amps ea.	26.5 Amps ea.
<b>TEFC Motor 1750 RPM, IP55, VFD Compatible, T-Frame, 89.5% Eff.</b>			

nb: All units can be manufactured for a vertical application. Information available on request  
4/17/2012