



ENERGY SAVING AIR BARRIERS

Creates up to a 90% seal on open doors using facility air

THINK EFFICIENT, THINK EFFECTIVE, THINK ENERSHIELD



AIR BARRIERS FOR ALL DOOR SIZES

From Take-Out Windows to Aircraft Hangars

APPLICATIONS

- SHIPPING / RECEIVING DOORS
- SERVICE BAYS
- PERSONNEL / RETAIL DOORS
- FOOD PREP / COOLERS
- MANUFACTURING APPLICATIONS
- WAREHOUSE / DISTRIBUTION

BENEFITS

- SAVE ENERGY
- ENHANCE COMFORT
- STOP COLD DRAFTS
- KEEP OUT HEAT / HUMIDITY
- DETER DUST & INSECTS
- ENVIRONMENTAL SEPARATION



AFTER 1 HOUR WITH DOOR OPEN

Buildings interior was maintained within 2° of set point temperature.

DID YOU KNOW?

For every unit of energy that your Air Barrier consumes, it will save you approximately 15 units of energy?

LEADERS IN THE INDUSTRY, INNOVATORS IN THE TECHNOLOGY.

SEALING OFF ANY OPEN DOORWAY WITH AIR BARRIER TECHNOLOGY IS JUST THE FIRST STEP TO EFFICIENT THINKING.

With the cost of energy continuing to rise, heating and cooling bills for your building are a major expense. For businesses that have their doors opened frequently due to high traffic volumes or even to offer an open and inviting business for passing foot traffic (potential customers), these costs are even greater.

Properly selecting an Air Barrier that can create an efficient and effective seal is as important as the decision to install the technology. We are a Canadian based manufacturer that designs and builds our units to perform in the toughest climates, hot or cold. We don't take any shortcuts when it comes to quality.

There are varying Air Barrier concepts on the market claiming to be equal to the Enershield design criteria, but when comparing feature to feature they fall well short of anything that Enershield manufactures.

AIR BARRIER VS. HEATED AIR CURTAIN?

Air Barriers should not be confused with a heated warm air curtain, whose primary design objective is to provide warmth at an open doorway. Without a proper seal over an open door, your expensively heated or air-conditioned air, along with the warm blast from a typical heated air curtain is immediately conveyed to the outside. A typical 5kw air curtain, operating 8 hours per day, 5 days per week will consume in excess of \$1,500 of electricity per annum. Under the same conditions an Enershield unit will consume \$90 of electricity per annum.

EFFECTIVELY SEAL YOUR DOORWAY

- WAREHOUSE & MANUFACTURING FACILITIES
- AUTOMOTIVE / EQUIPMENT SERVICES
- SHIPPING / RECEIVING DOORS
- RETAIL / PERSONNEL DOORS
 - CAR WASHES
 - PARKING GARAGES
 - TAKE OUT WINDOWS
 - FREEZERS / COOLERS
- ENVIRONMENTAL SEPARATION
 - INSECT CONTROL
 - FOOD PROCESSING



*Recognized by Natural Resources Canada, Office of Energy Efficiency as a proven method to save energy.



Microshield



Comfortshield



Durashield HD



Ultrashield

HOW AN AIR BARRIER WORKS

Enershield Air Barriers create an effective seal on the doorway by re-circulating the facility air in a laminar (smooth) flow across an open doorway. The kinetic energy in the moving air generates a barrier, like a waterfall, that prevents leakage of air between two areas with different pressure and climate. The more laminar this air flow, the harder it is for outside air to penetrate the barrier.

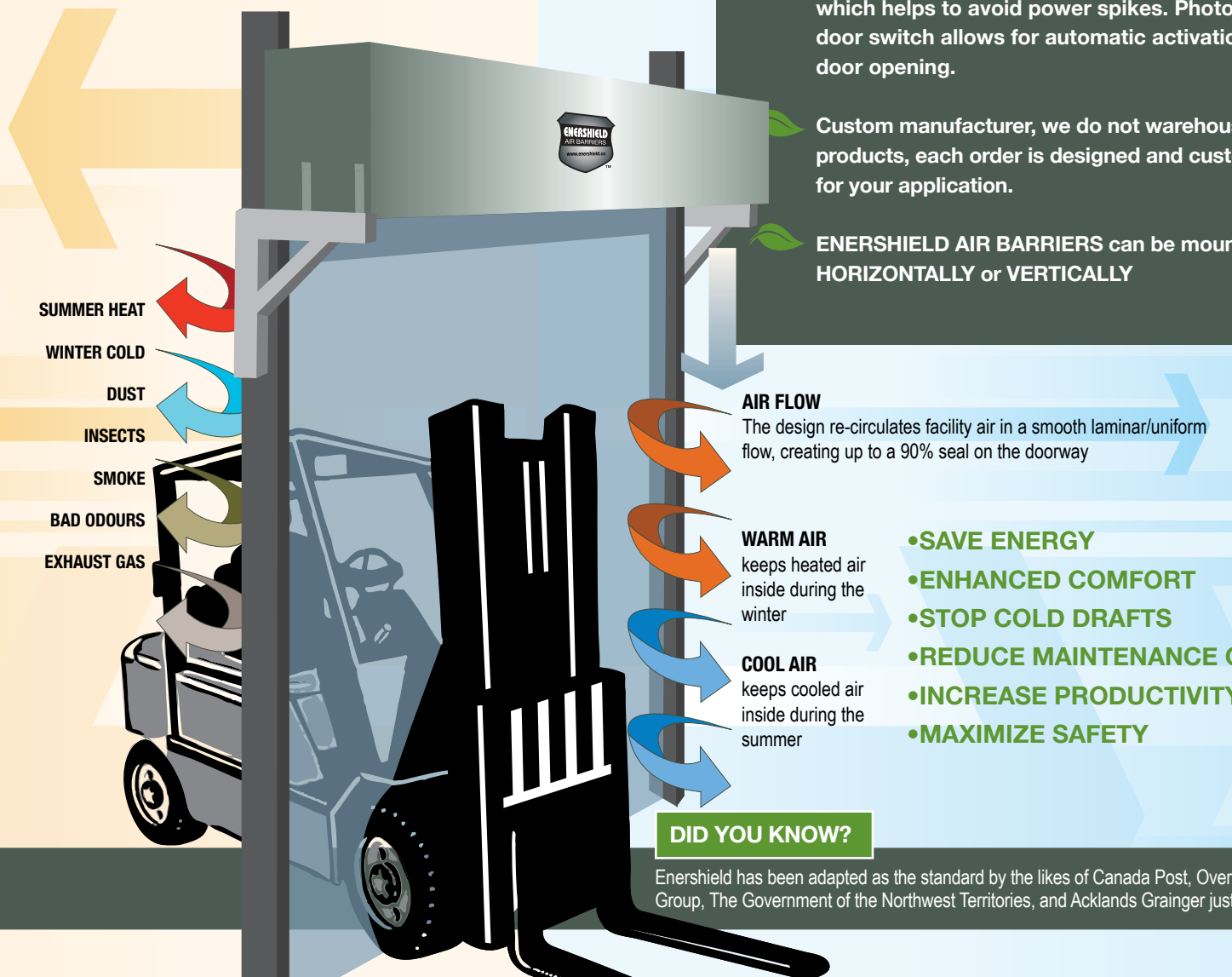
SAVINGS AND COMFORT

Open doors account for a considerable amount of the energy loss in a building. A correctly installed Air Barrier can seal off an open doorway, and reduce the heat (and air conditioning) loss through the door as much as 90%, translating into substantial energy savings, as well as a more comfortable environment for both employees and customers – when employees are more comfortable, they tend to work harder, which results in increased productivity. When customers are more comfortable, they tend to stay longer and spend more, resulting in increased profit!

Air Barriers are also beneficial in certain manufacturing and packaging processes where a contaminant free atmosphere and/or temperature are critical.

ADVANTAGES OF UTILIZING ENERSHIELD

- CSA Canadian Certified Manufacturing facility of the highest quality.
- Powder coated steel frame construction and sheet metal jacket provide a rigid, corrosion resistant unit to withstand even the harshest environments.
- Acoustic insulation allows for quiet operation.
- Uniform and consistent spacing of blowers, external motor placement on larger units along with patented unique diffuser gives the required laminar air flow to efficiently seal the door.
- Telescopic sliders and provided wall brackets allow for ease of install.
- Control panel incorporates soft start technology, which helps to avoid power spikes. Photo cell door switch allows for automatic activation upon door opening.
- Custom manufacturer, we do not warehouse our products, each order is designed and customized for your application.
- ENERSHIELD AIR BARRIERS can be mounted HORIZONTALLY or VERTICALLY



- SAVE ENERGY
- ENHANCED COMFORT
- STOP COLD DRAFTS
- REDUCE MAINTENANCE COSTS
- INCREASE PRODUCTIVITY
- MAXIMIZE SAFETY

DID YOU KNOW?

Enershield has been adapted as the standard by the likes of Canada Post, Overwaitea Food Group, The Government of the Northwest Territories, and Acklands Grainger just to name a few.

PROVEN SUCCESS

The following companies enjoy the benefits of AIR BARRIERS



SATISFIED CUSTOMERS

"The benefits realized by utilizing the Enershield system are far reaching"

Bruce Smid - Halliburton

"The savings based on a 3 year average was approximately a \$500-\$700 / month over the 5 month heating season"

Robert Polley - West Side Acura

"The installation of Air Barriers has allowed us to remove the overhead heaters in our loading dock while creating a more temperate and stable climate."

Cory Toffan - Acklands Grainger Inc.

For retail doorway up to 7' high – Direct Drive Motors (110v) – Cabinet (93/8" H x 83/4" W)

Microshield	MCS-36	MCS-48	MCS-72
Air Velocity (fpm) High/Low	3150 / 2500	3150 / 2500	3150 / 2500
Air Volume (cfm) High/Low	647 / 530	883 / 706	1340 / 1060
Motor (s) (hp)	2 @ ½	2 @ ½	3 @ ½
Weight lbs/Kg	35.2 lbs/16 Kg	39.7 lbs/18 Kg	57.2 lbs/26 Kg

For retail doorway up to 8' high – Direct Drive (1ph) – Cabinet (16½" H x 165/8" W)

Comfortshield	CS-36	CS-48	CS-72	CS-96
Air Velocity (fpm) / (m/s)	4200 / 21.5	4200 / 21.5	4200 / 21.5	4200 / 21.5
Air Volume (cfm) / (l/s)	4100 / 1935	4100 / 1935	6150 / 2900	8200 / 3870
Motor (s) (hp)	2 @ ½	2 @ ½	3 @ ½	4 @ ½
Weight lbs / Kg	150 lbs / 68 Kg	170 lbs / 77 Kg	246 lbs / 112 Kg	300 lbs / 136 Kg

For climate control up to 9' high – Direct drive motors (1ph) – Cabinet (20" H x 17½" W)

Durashield	DS-72	DS-96	DS-120	DS-144	DS-168	DS-192
Air Velocity (fpm) / (m/s)	4500 / 23	4500 / 23	4500 / 23	4500 / 23	4500 / 23	4500 / 23
Air Volume (cfm) / (l/s)	8475 / 4000	11,300 / 5333	14,125 / 6666	16,950 / 8000	19,775 / 9333	22,600 / 10,666
Motor (s) (hp)	3 @ ½	4 @ ½	5 @ ½	6 @ ½	7 @ ½	8 @ ½
Weight lbs / Kg	300 lbs / 136 Kg	400 lbs / 181 Kg	500 lbs / 227 Kg	600 lbs / 272 Kg	700 lbs / 318 Kg	800 lbs / 363 Kg

For climate control up to 12' high – Belt drive (3ph) – Cabinet (20" H x 17½" W)

Durashield-HD	DSH-96	DSH-120	DSH-144	DSH-168	DSH-192
Air Velocity (fpm) / (m/s)	5500 / 28	5500 / 28	5500 / 28	5500 / 28	5500 / 28
Air Volume (cfm) / (l/s)	12,900 / 6088	16,125 / 7610	19,350 / 9132	22,575 / 10,654	25,800 / 12,176
Motor (s) (hp)	1 @ 5	1 @ 7½	2 @ 5	2 @ 5	2 @ 5
Weight lbs / Kg	510 lbs / 231 Kg	650 lbs / 295 Kg	865 lbs / 393 Kg	905 lbs / 412Kg	1012 lbs / 460Kg

For climate control up to 18' high – Belt drive (3ph) – Cabinet (22" H x 19½" W)

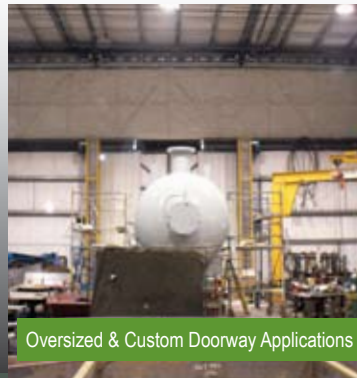
Ultrashield	US-120	US-144	US-168	US-192	US-216	US-240
Air Velocity (fpm) / (m/s)	6500 / 33	6500 / 33	6500 / 33	6500 / 33	6500 / 33	6500 / 33
Air Volume (cfm) / (l/s)	19,875 / 9380	23,850 / 11,256	27,825 / 13,132	31,800 / 15,008	35,775 / 16,884	39,750 / 18,760
Motor (s) (hp)	1 @ 10	2 @ 7½	2 @ 7½	2 @ 10	2 @ 10	2 @ 10
Weight lbs / Kg	800 lbs / 363 Kg	1080 lbs / 490kg	1153 lbs / 523Kg	1276 lbs / 579Kg	1388 lbs / 630kg	1542 lbs / 699kg

For climate control up to 26' high – Belt drive (3ph) – Cabinet (23 5/8" H x 22" W)

Xtremeshield	XS-120	XS-150	XS-180	XS-210	XS-240
Air Velocity (fpm) / (m/s)	7500 / 38.1	7500 / 38.1	7500 / 38.1	7500 / 38.1	7500 / 38.1
Air Volume (cfm) / (l/s)	23,825 / 11,244	29,781 / 14,055	35,738 / 16,866	41,694 / 19,677	47,650 / 22,488
Motor (s) (hp)	1 @ 15	1 @ 20	2 @ 15	2 @ 15	2 @ 15
Weight lbs / Kg	900 lbs / 408 Kg	1065 lbs / 483 Kg	1320 lbs / 599 Kg	1564 lbs / 709 Kg	1760 lbs / 798 Kg



Vertical & High Humidity Applications



Oversized & Custom Doorway Applications

DISTRIBUTED BY:

Lease payments can be offset by the monthly energy savings. Please call for details.

Head Office: 16813 - 113 Avenue
Edmonton, AB T5M 2X2
Phone: (780) 482-4662 • Fax: (780) 482-4074

